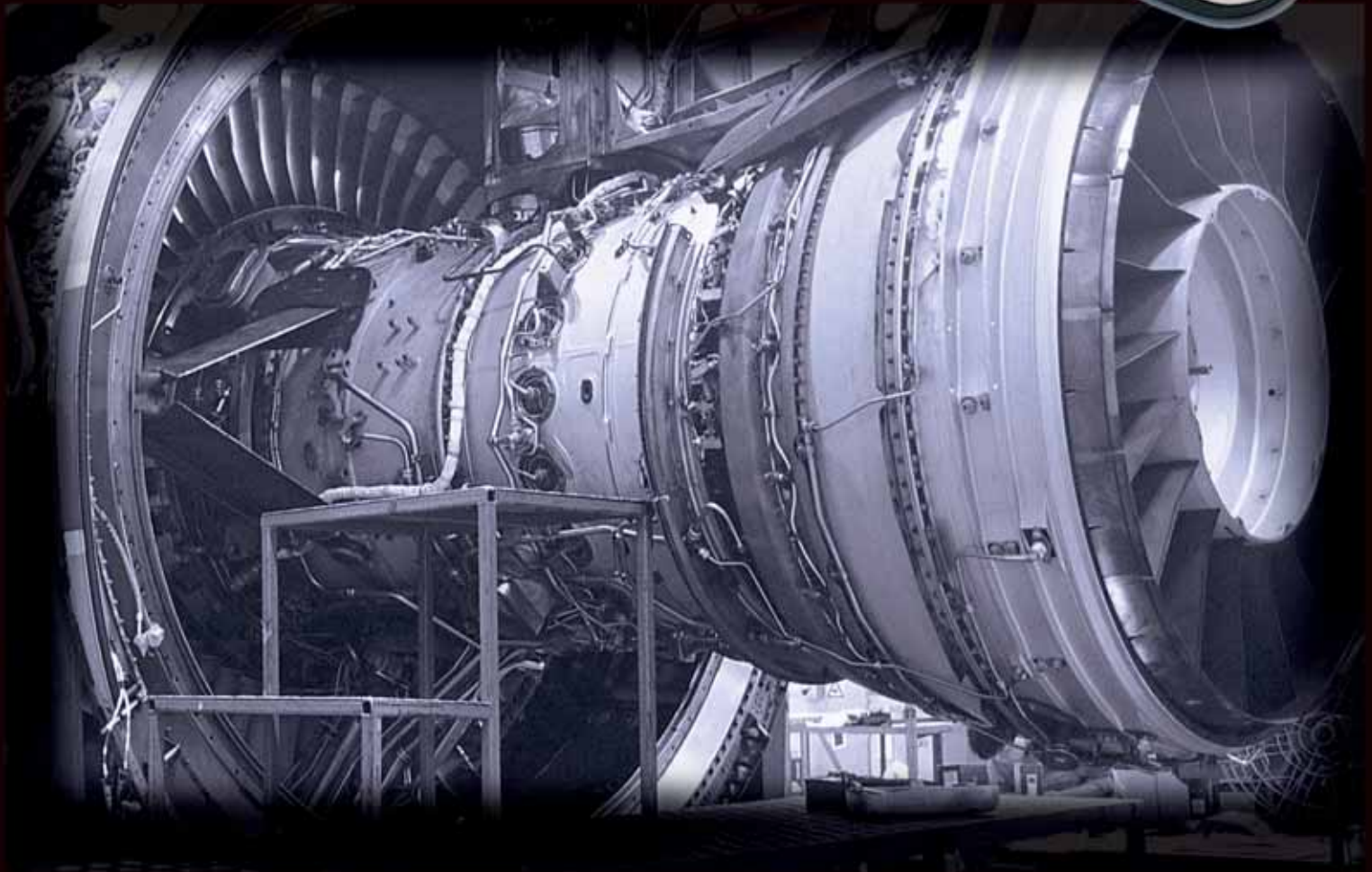


STANLEY

**PROTO®**

# COMBINATION RATCHETING WRENCHES



STANLEY

**PROTO**

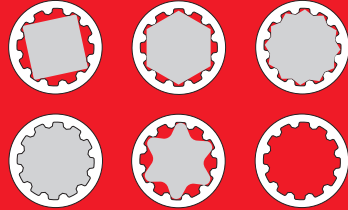
## Reversible and Non-Reversible Combination Ratcheting Wrenches

Proto® Ratcheting Wrenches feature a spline ratcheting end to turn multiple fasteners while helping increase the force applied to the fastener. Spline tools engage the flats of conventional nut fasteners to move the loads away from the corner of the fastener and transfer them over a broader surface area.



Chrome-vanadium box ends and switch levers

- Helps increase the force that can be applied to a fastener
- Helps reduce damage to fasteners
- Easy to access restricted spaces compared to a socket



Versatile usages on 4pt, 6pt, 12pt, spline, female Torx® fastener and slightly rounded fasteners

Spline box end offers the flexibility to turn 5 different fasteners



### Spline Ratcheting

Spline tools are designed to service high tensile strength fasteners used widely on military and commercial aircraft and heavy machinery applications where vibration is prevalent. They are also used in automotive and industrial areas where high performance torque needs to be achieved.

Spline wrenches move the load away from the corners helping to increase the force that can be applied to a fastener without fastener rounding. The increased contact area between the surface of the wrench and the surface of the fastener enables the same force to be applied with less risk of scoring the fastener. On a spline fastener, the precise fit between the spline wrench and the fastener helps prevent rounding of edges. Preventing fastener damage like scoring and rounding lowers FOD concerns.

### Double Box End Ratcheting Wrenches

- Reverse spline box end offers the flexibility to turn 5 different fasteners
- Distinctive black chrome finish
- Chrome-vanadium box ends and switch levers

The Proto® Ratcheting Wrench line of tools is appropriate for use in aerospace, government and industries with heavy machinery.



Torx® is a registered trademark of Textron.

## Proto® Anti-Slip Design (ASD) Wrenches

The Anti-slip open end incorporates the patented Proto® Anti-Slip Design (ASD) which features a locking groove that engages the fastener while the wrench is being turned, helping to prevent the wrench from slipping off the fastener. The arched surface spreads the force over a 400% larger contact area to help prolong the life of the fastener.

- Helps increase productivity and efficiency
- Less risk of knuckle injury from wrench slippage
- Increased torque applied to the fastener
- No ribs or serrations to damage fasteners
- Fewer rounded fasteners

Traditional wrenches often slip, causing fastener damage and knuckle injury. Fastener damage also occurs by concentrating forces at the corners with point-to-point contact. The arched surface of the Proto® Anti-Slip Design wrench spreads the force over a 400% larger contact area, to help prolong the fastener life.



## Wrench Safety

Use safety goggles. Serious eye injury is possible. Pull the wrench toward you. Do not push. Do not use extenders or cheater bars. Strike striking/slugging wrenches squarely. Do not overblow or underblow. Use correct size wrenches. Do not use fractional wrenches on metric fasteners, or vice versa. Use the type of wrench that fits the job. Use a box type wrench if possible. Maintain your balance. Use a commercial lubricant on a corroded fastener. Do not use a damaged wrench. Replace.

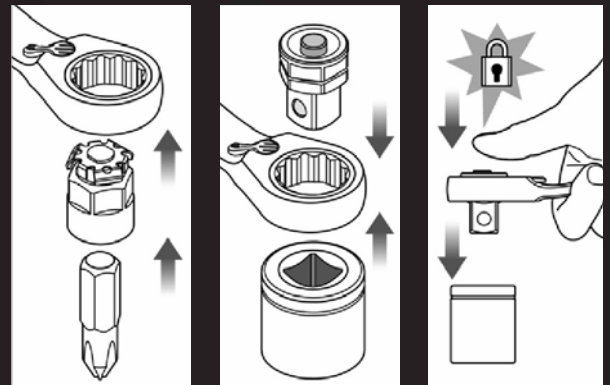
*Distinctive black chrome finish*



## Ratcheting Wrench Adapter Sets

For use on box end of ratcheting wrenches to convert ratcheting wrenches into thin ratchets or ratcheting bit drivers. Bit adapter for 3/8" ratcheting wrench or reversible ratcheting wrench for 1/4" bits. Socket drive adapter for 1/4", 3/8", and 1/2" drive sockets. (Use adapters with either 3/8", 1/2", and 3/4" or 10mm, 13mm, and 19mm ratcheting wrenches, respectively.)

Sockets work on both English and Metric wrenches.



*All adapters utilize a convenient and stable locking and release system*

Reversing Combination Ratcheting Wrenches					Weight
Part#	Description	Length	Width	Height	(lbs.)
JSCV-9S	9PC WRENCH SET RCH SPLINE IN 9/32 #9, 5/16 #10, 3/8 #12, 7/16 #14, 1/2 #16, 9/16 #18, 5/8 #20, 11/16 #22, 3/4 #24, Pouch	n/a	n/a	n/a	2.78
JSCV-20S	20PC WRENCH SET RCH SPLINE IN 7/32 #7, 1/4 #8, 9/32 #9, 5/16 #10, 11/32 #11, 3/8 #12, 7/16 #14, 1/2 #16, 9/16 #18, 5/8 #20, 11/16 #22, 3/4 #24, 13/16 #26, 7/8 #28, 15/16 #30, 1 #32, 1-1/16 #34, 1-1/8 #36, 1-1/4 #40, 1-1/2 #48, Pouch	n/a	n/a	n/a	16.2
JSCV07	WRENCH COMB REV SPLINE 7/32 #7	5"	9/16"	1/8"	0.06
JSCV08	WRENCH COMB REV SPLINE 1/4 #8	5"	9/16"	1/8"	0.06
JSCV09	WRENCH COMB REV SPLINE 9/32 #9	5-1/2"	11/16"	1/8"	0.07
JSCV10	WRENCH COMB REV SPLINE 5/16 #10	5-1/2"	11/16"	1/8"	0.07
JSCV11	WRENCH COMB REV SPLINE 11/32 #11	5-15/16"	3/4"	1/8"	0.09
JSCV12	WRENCH COMB REV SPLINE 3/8 #12	6-1/4"	13/16"	1/8"	0.11
JSCV14	WRENCH COMB REV SPLINE 7/16 #14	6-1/2"	15/16"	1/8"	0.14
JSCV16	WRENCH COMB REV SPLINE 1/2 #16	7"	1-1/16"	3/16"	0.2
JSCV18	WRENCH COMB REV SPLINE 9/16 #18	7-1/2"	1-1/8"	3/16"	0.22
JSCV20	WRENCH COMB REV SPLINE 5/8 #20	8-3/16"	1-5/16"	3/16"	0.33
JSCV22	WRENCH COMB REV SPLINE 11/16 #22	8-7/8"	1-3/8"	3/16"	0.37
JSCV24	WRENCH COMB REV SPLINE 3/4 #24	9-3/4"	1-9/16"	1/4"	0.48
JSCV26	WRENCH COMB REV SPLINE 13/16 #26	11-7/16"	1-13/16"	1/4"	0.77
JSCV28	WRENCH COMB REV SPLINE 7/8 #28	11-7/16"	1-13/16"	1/4"	0.73
JSCV30	WRENCH COMB REV SPLINE 1-1/8 #30	12-3/4"	2-1/16"	1/4"	1.02
JSCV32	WRENCH COMB REV SPLINE 1 #32	12-3/4"	2-1/16"	1/4"	1
JSCV34	WRENCH COMB REV SPLINE 1-1/16 #34	14-1/8"	2-1/4"	5/16"	1.45
JSCV36	WRENCH COMB REV SPLINE 1-1/8 #36	15-7/8"	2-5/16"	5/16"	1.96
JSCV40	WRENCH COMB REV SPLINE 1-1/4 #40	16-3/4"	2-1/2"	5/16"	2.3
JSCV48	WRENCH COMB REV SPLINE 1-1/2 #48	19-5/16"	2-13/16"	3/8"	3.09
JSCVM-13S	13PC WRENCH SET RCH SPLINE MM 7mm, 8mm, 9mm, 10mm, 11mm, 12mm, 13mm, 14mm, 15mm, 16mm, 17mm, 18mm, 19mm, Pouch	n/a	n/a	n/a	4
JSCVM-22S	22PC WRENCH SET RCH SPLINE MM 6mm, 7mm, 8mm, 9mm, 10mm, 11mm, 12mm, 13mm, 14mm, 15mm, 16mm, 17mm, 18mm, 19mm, 21mm, 22mm, 24mm, 27mm, 30mm, 32mm, 34mm, 36mm, Pouch	n/a	n/a	n/a	5.5
JSCVM06	WRENCH COMB REV SPLINE 6MM	5"	9/16"	1/8"	0.06
JSCVM07	WRENCH COMB REV SPLINE 7MM	5-1/2"	11/16"	1/8"	0.07
JSCVM08	WRENCH COMB REV SPLINE 8MM	5-1/2"	11/16"	1/8"	0.07
JSCVM09	WRENCH COMB REV SPLINE 9MM	5-15/16"	3/4"	1/8"	0.09
JSCVM10	WRENCH COMB REV SPLINE 10MM	6-1/4"	13/16"	1/8"	0.11
JSCVM11	WRENCH COMB REV SPLINE 11MM	6-9/16"	15/16"	1/8"	0.14
JSCVM12	WRENCH COMB REV SPLINE 12MM	6-3/4"	1"	3/16"	0.17
JSCVM13	WRENCH COMB REV SPLINE 13MM	7"	1-11/16"	3/16"	0.2
JSCVM14	WRENCH COMB REV SPLINE 14MM	7-1/2"	1-1/8"	3/16"	0.24
JSCVM15	WRENCH COMB REV SPLINE 15MM	7-7/8"	1-1/4"	3/16"	0.28
JSCVM16	WRENCH COMB REV SPLINE 16MM	8-3/16"	1-5/16"	3/16"	0.33
JSCVM17	WRENCH COMB REV SPLINE 17MM	8-7/8"	1-3/8"	3/16"	0.39
JSCVM18	WRENCH COMB REV SPLINE 18MM	9-5/16"	1-1/2"	3/16"	0.43
JSCVM19	WRENCH COMB REV SPLINE 19MM	9-3/4"	1-9/16"	1/4"	0.5
JSCVM21	WRENCH COMB REV SPLINE 21MM	11-7/16"	1-13/16"	1/4"	0.76
JSCVM22	WRENCH COMB REV SPLINE 22MM	11-7/16"	1-13/16"	1/4"	0.76
JSCVM24	WRENCH COMB REV SPLINE 24MM	12-3/4"	2-1/16"	1/4"	1.06
JSCVM27	WRENCH COMB REV SPLINE 27MM	14-1/8"	2-1/4"	5/16"	1.42
JSCVM30	WRENCH COMB REV SPLINE 30MM	15-7/8"	2-5/16"	5/16"	1.89
JSCVM32	WRENCH COMB REV SPLINE 32MM	16-3/4"	2-1/2"	5/16"	2.32
JSCVM34	WRENCH COMB REV SPLINE 34MM	18-1/8"	2-1/2"	3/8"	2.65
JSCVM36	WRENCH COMB REV SPLINE 36MM	19-5/16"	2-13/16"	3/8"	3.09

Non-Reversing Combination Wrenches					Weight
Part#	Description	Length	Width	Height	(lbs.)
JSCR-9S	9PC WRENCH SET RCH SPLINE IN 1/4 #8, 5/16 #10, 7/16 #14, 1/2 #16, 9/16 #18, 5/8 #20, 11/16 #22, 3/4 #24, Pouch	n/a	n/a	n/a	2.71
JSCR08	WRENCH COMB RCH SPLINE 1/4 #8	5"	9/16"	1/8"	0.05
JSCR10	WRENCH COMB RCH SPLINE 5/16 #10	5-1/2"	11/16"	1/8"	0.06
JSCR11	WRENCH COMB RCH SPLINE 11/32 #11	5-15/16"	3/4"	1/8"	0.08
JSCR12	WRENCH COMB RCH SPLINE 3/8 #12	6-1/4"	13/16"	1/8"	0.1
JSCR14	WRENCH COMB RCH SPLINE 7/16 #14	6-1/2"	15/16"	1/8"	0.13
JSCR16	WRENCH COMB RCH SPLINE 1/2 #16	7"	1 1/16"	3/16"	0.18
JSCR18	WRENCH COMB RCH SPLINE 9/16 #18	7-1/2"	1 1/8"	3/16"	0.22
JSCR20	WRENCH COMB RCH SPLINE 5/8 #20	8-3/16"	1 5/16"	3/16"	0.32
JSCR22	WRENCH COMB RCH SPLINE 11/16 #22	8-7/8"	1 3/8"	3/16"	0.38
JSCR24	WRENCH COMB RCH SPLINE 3/4 #24	9-3/4"	1 9/16"	1/4"	0.47
JSCR26	WRENCH COMB RCH SPLINE 13/16 #26	11-7/16"	1 13/16"	1/4"	0.7
JSCR28	WRENCH COMB RCH SPLINE 7/8 #28	11-7/16"	1 13/16"	1/4"	0.7
JSCR30	WRENCH COMB RCH SPLINE 15/16 #30	12-3/4"	2 1/16"	1/4"	1.02
JSCR32	WRENCH COMB RCH SPLINE 1 #32	12-3/4"	2 1/16"	1/4"	1.02
JSCRM-10S	10PC WRENCH SET RCH SPLINE MM 10MM, 11MM, 12MM, 13MM, 14MM, 15MM, 16MM, 17MM, 18MM, 19MM, Pouch	n/a	n/a	n/a	3.53
JSCRM08	WRENCH COMB RCH SPLINE 8MM	5-1/2"	11/16"	1/8"	0.06
JSCRM09	WRENCH COMB RCH SPLINE 9MM	5-15/16"	3/4"	1/8"	0.08
JSCRM10	WRENCH COMB RCH SPLINE 10MM	6-1/4"	13/16"	1/8"	0.1
JSCRM11	WRENCH COMB RCH SPLINE 11MM	6-1/2"	15/16"	1/8"	0.13
JSCRM12	WRENCH COMB RCH SPLINE 12MM	6-3/4"	1"	1/8"	0.16
JSCRM13	WRENCH COMB RCH SPLINE 13MM	7"	1-1/16"	3/16"	0.18
JSCRM14	WRENCH COMB RCH SPLINE 14MM	7-1/2"	1-1/8"	3/16"	0.22
JSCRM15	WRENCH COMB RCH SPLINE 15MM	7-7/8"	1-1/4"	3/16"	0.25
JSCRM16	WRENCH COMB RCH SPLINE 16MM	8-3/16"	1-5/16"	3/16"	0.32
JSCRM17	WRENCH COMB RCH SPLINE 17MM	8-7/8"	1-7/16"	3/16"	0.38
JSCRM18	WRENCH COMB RCH SPLINE 18MM	9-5/16"	1-1/2"	3/16"	0.46
JSCRM19	WRENCH COMB RCH SPLINE 19MM	9-3/4"	1-9/16"	1/4"	0.47

#### Double Box Ratcheting Wrenches

Part#	Description	Length	Width	Height	Weight
					(lbs.)
JSBV-8S	8PC WRENCH SET RCH SPLINE IN 7/32 X 9/32, 1/4 X 5/16, 3/8 X 7/16, 1/2 X 9/16, 5/8 X 11/16, 3/4 X 7/8, 13/16 X 15/16, 1 X 1-1/8, Pouch	n/a	n/a	n/a	4.12
JSBV0709	WRENCH BOX REV SPLINE 7/32 X 9/32	4-1/2"	11/16"	1/8"	0.08
JSBV0810	WRENCH BOX REV SPLINE 1/4 X 5/16	4-1/2"	11/16"	1/8"	0.08
JSBV1214	WRENCH BOX REV SPLINE 3/8 X 7/16	5-15/16"	7/8"	1/8"	0.12
JSBV1618	WRENCH BOX REV SPLINE 1/2 X 9/16	7-1/16"	1"	3/16"	0.23
JSBV2022	WRENCH BOX REV SPLINE 5/8 X 11/16	7-7/8"	1-3/16"	3/16"	0.35
JSBV2428	WRENCH BOX REV SPLINE 3/4 X 7/8	9-5/8"	1-5/8"	1/4"	0.57
JSBV2630	WRENCH BOX REV SPLINE 13/16 X 15/16	10-1/4"	1-13/16"	1/4"	0.84
JSBV3236	WRENCH BOX REV SPLINE 1 X 1-1/8	11-5/8"	2-5/16"	5/16"	0.95
JSBV3440	WRENCH BOX REV SPLINE 1-1/16 X 1-1/4	13"	2-1/2"	5/16"	1.06

#### Ratcheting Wrench Adapter Sets

Part#	Description	Length	Width	Height	Weight
					(lbs.)
JHA4S	4PC RCH WRENCH RCH ADR IN 3/8 BIT ADR 1/4, 3/8 DRV ADR 1/4 1/2 DRV ADR 3/8, 3/4 DRV ADR 1/2	n/a	n/a	n/a	0.21
JHAD12	3/8 RCH WR BIT ADAPTER 1/4	5/8"	7/16"	5/8"	0.01
JHAX12	3/8 RCH WR DRV ADR 1/4	5/8"	7/16"	5/8"	0.02
JHAX16	1/2 RCH WR DRV ADR 3/8	7/8"	9/16"	7/8"	0.04
JHAX24	3/4 RCH WR DRV ADR 1/2	1-1/8"	13/16"	1-1/8"	0.11
JHAM4S	4PC RCH WRENCH DRV ADR MM 10MM BIT ADR 1/4, 10MM DRV ADR 1/4 13MM DRV ADR 3/8, 19MM DRV ADR 1/2	n/a	n/a	n/a	0.22
JHAXM10	10MM RCH WR BIT ADR 1/4	5/8"	7/16"	5/8"	0.02
JHADM10	10MM RCH WR DRV ADR 1/4	5/8"	7/16"	5/8"	0.02
JHADM13	13MM RCH WR DRV ADR 3/8	7/8"	9/16"	7/8"	0.04
JHADM19	19MM RCH WR DRV ADR 1/2	1-1/8"	13/16"	1-1/8"	0.11

STANLEY

**PROTO**<sup>®</sup>

2195 East View Parkway, Suite 103 Conyers, GA 30013

www.stanleyproto.com Customer Service: 1-800-800-TOOL

⚠ WARNING: Work Safely With Tools Wear Safety Goggles.